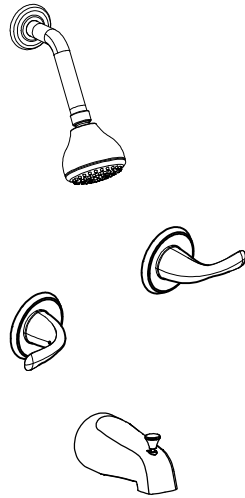


ULTRA FAUCETS

INSTRUCTION



Two Handle Tub & Shower Faucet
Model no: UF7900X

Tools:

- Adjustable wrench
- Groove joint plier
- Pipe wrench
- Pipe tape
- Phillips screwdriver



Maintenance

Your new bathroom faucet is designed for years of trouble-free performance. Keep it looking new by cleaning it periodically with a soft cloth. Avoid abrasive cleaners, steel wool and harsh chemicals as these will dull the finish and void your warranty.

Preparation / Assembly

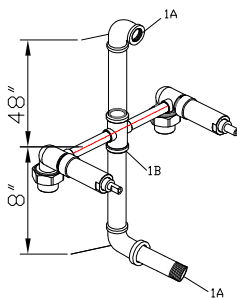


Fig. 1

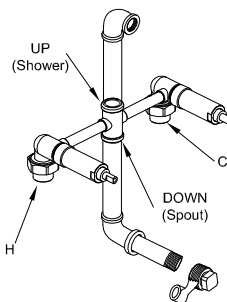


Fig. 2

- 1** Recommended component locations:
(see Fig. 1)

Recommended depth for body
in wall is 3" (2-1/2" MIN--3-3/4" MAX).

1A. Shower and / or spout outlet hole:
1-1/4" diameter.

1B. Body access hole:
9-1/2" Length & 3" Width, rectangle.

CAUTION: Allow at least 2" between tub
outlet and tub rim.

Assembly

- 2** A. Position body correctly in wall
(see Fig. 2). UP marking is on up side
and DOWN marking on down side.

B. Turn on hot and cold water
supply lines.
Note: Pressure must be approximately
equal on both hot and cold sides for
cartridges to function properly.

C. Rotate stem to allow water to flow
from tub spout until there is no
foreign matter in discharge.

H - hot water supply
C - cold water supply
Up - shower outlet
Down - tub outlet

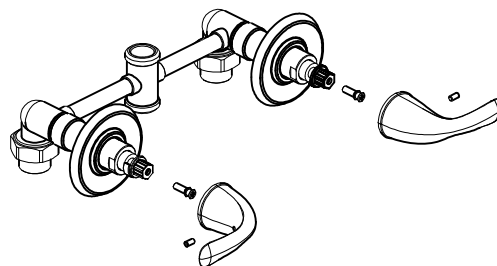


Fig. 3

Pressure testing

A. Install a 1/2" iron pipe plug (not included)
on both shower and tub outlets.
Turn stem to full "ON" and check
all connections for leaks.

B. Turn stem to "OFF".

- 3** A. Caution: Slowly remove pipe plugs
from shower and tub outlets.

B. After wall treatment, remove
screws.

C. Install the handle assembly
(see Fig. 3).

- 4** A. Install tub spout and shower assembly
(see Fig. 4).

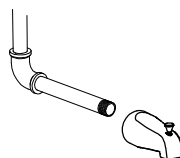
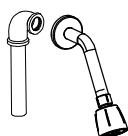
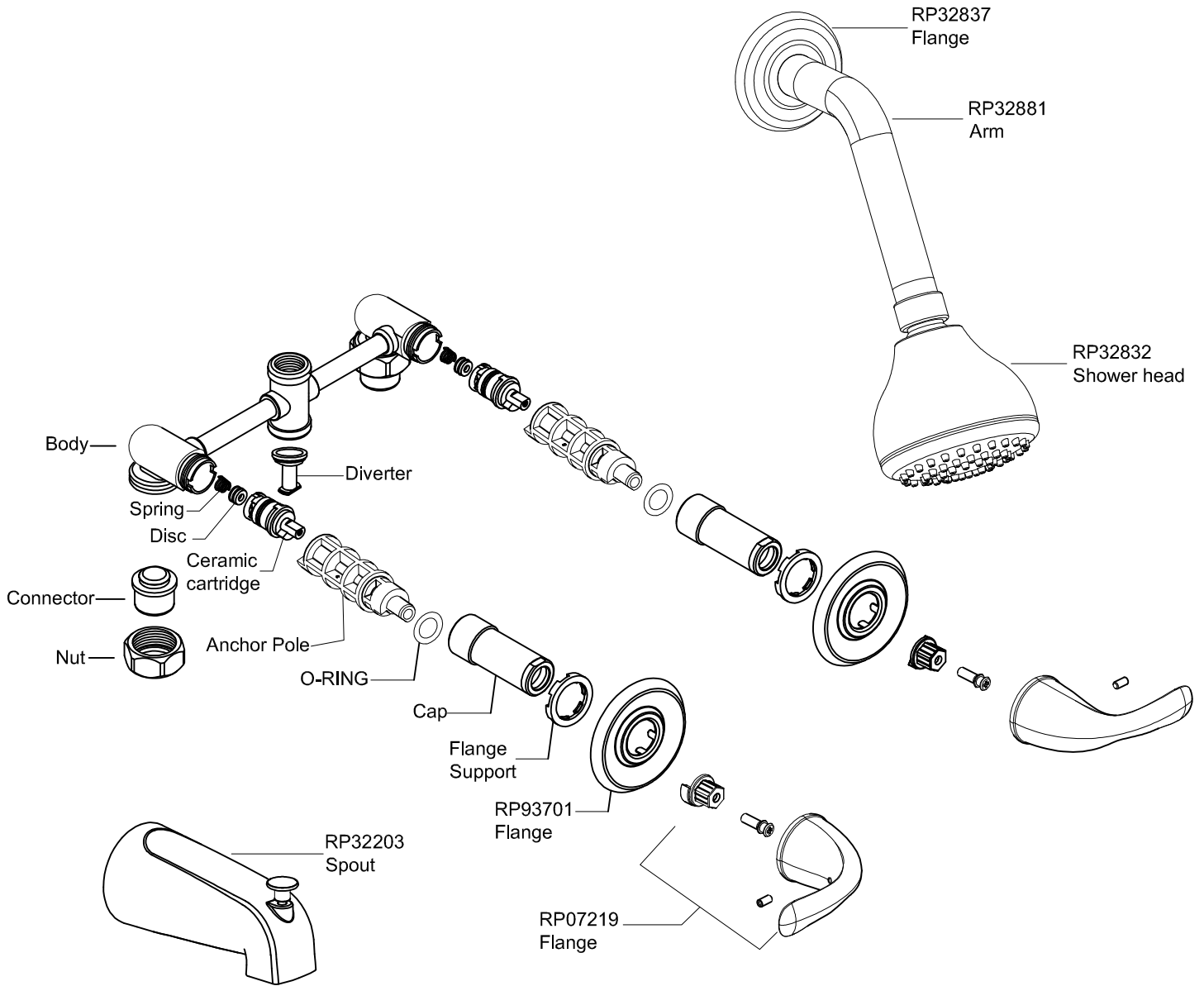


Fig. 4

Exploded Drawing RP(Replacement Parts)



Limited Lifetime Warranty

Ultra Faucets warrants to the original purchaser that its products will be free from defects in workmanship and materials. All Ultra Faucets are provided with a life time limited warranty. This warranty does not cover any other labor or service charges associated with the removal, repair, or reinstallation of Ultra Faucets products. This express warranty does not apply to products that have been damaged as a result of misuse, abuse, negligence, accident, faulty installation or maintenance practices and/or used in any manner contrary to those recommended by the manufacturer.