

# EURO Collection

Pot Filler



## Installation/Installation/Instalación

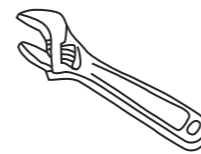
### **CUSTOMER SERVICE**

**TOLL-FREE 1-888-OK-ULTRA (658-5872)**

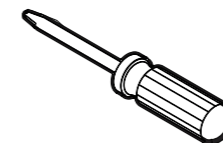
**UF91700 - Polished Chrome**  
**UF91703 - PVD Brushed Nickel**  
**UF91705- Oil Rubbed Bronze**  
**UF91707- Matte Black**



### Tools You Will Need / Outils dont vous aurez besoin / Herramientas necesarias



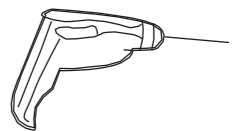
Adjustable Wrench  
Clé à molette  
Llave ajustable



Phillips Screwdriver  
Tournevis Phillips  
Destornillador cruciforme



Pipe Tape  
Ruban pour tuyau  
Cinta selladora para rosca



Drill  
Percer  
Perforar

### **SAFETY TIPS**

- If you use soldering for the installation of the faucet, the seats, cartridges and washers will have to be removed before using flame. Otherwise, warranty will be void on those parts.
- Cover your drain to avoid losing parts.
- 0°C~55°C.

### **CONSIGNES DE SÉCURITÉ**

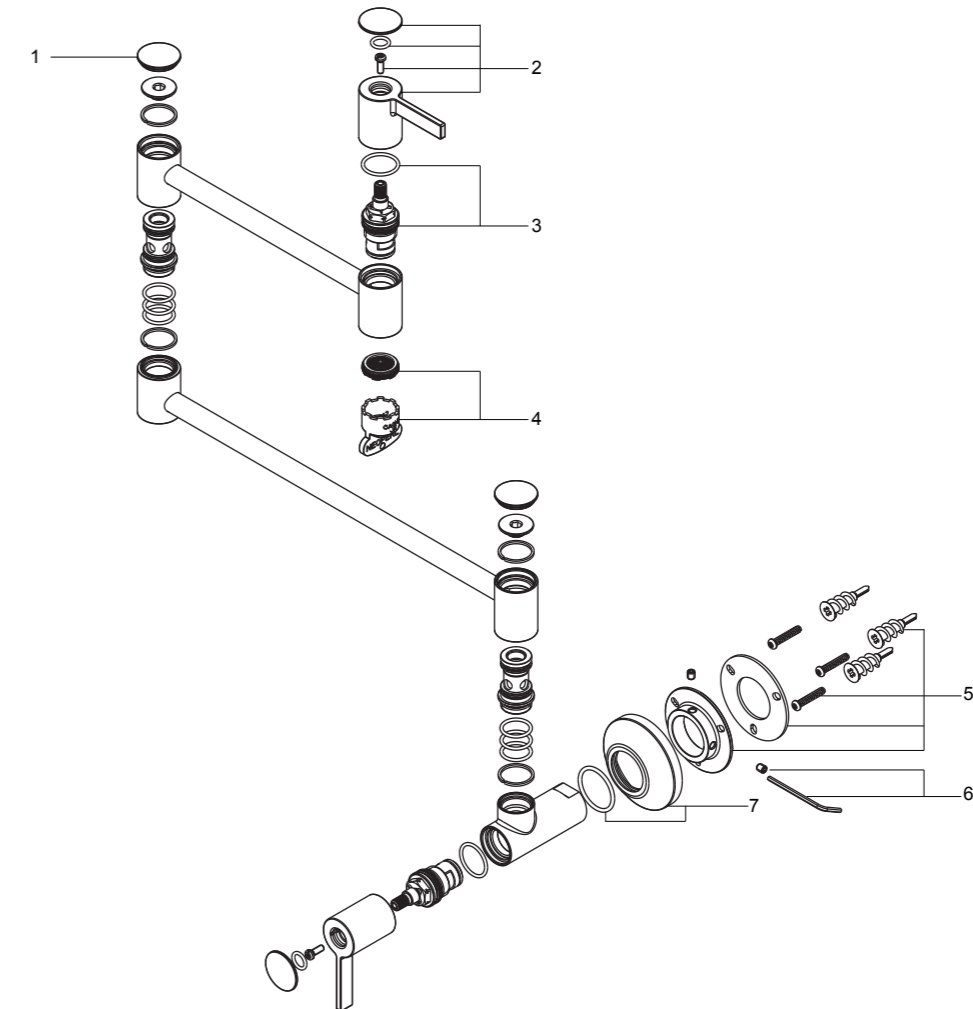
- Si vous posez le robinet par brasage, il est essentiel de retirer les sièges, les cartouches et les rondelles avant d'appliquer la flamme, faute de quoi la garantie sur ces pièces sera annulée.
- Couvrez le drain pour ne pas perdre des pièces.
- 0°C~55°C.

### **CONSEJOS DE SEGURIDAD**

- En el caso de utilizar soldadura para instalar el grifo, remueva los asientos, cartuchos y arandelas antes de usar la llama. De lo contrario, se anulará la garantía para esos componentes.
- Tape la boca del desagüe para prevenir la pérdida de piezas pequeñas.
- 0°C~55°C.

<p>Connect to 1/2" IPS supply line. The pipe should extend 1/2" past the finished wall surface. Warning: Connect to cold water only.</p>	<p>Mark the screw holes in the washer. Drill 6 mm holes where marked.</p>	<p>Apply Teflon tape to the supply pipe. Install the washer and wall flange with 3 set screws. Note: please make sure the wall flange is placed as above direction when installation. 2 set screw holes should be at 12 o'clock and 3 o'clock positions.</p>
<p>Place flange trim onto the faucet as shown. Thread the faucet onto pipe. Tighten securely, but do not overtighten.</p>	<p>Tighten 2 set screws in wall flange to secure the faucet. Slide flange trim over the wall flange.</p>	<p>Remove aerator with wrench and turn the faucet handle to full on position. Turn on cold water supplies and flush water lines for one minute. Check all connections for leaks. Install the aerator back and installation complete.</p>

NO.	Description	Part No.
1	Cap	5L0143500**0
2	Handle assembly	5Y0256000**0
3	Cartridge assembly	5Y0256100NT0
4	Aerator assembly	5Y0256200PL0
5	Mounting hardware	5Y0256300NT0
6	Set screws with wrench	5Y0167700NT0
7	Flange with o-ring	5Y0256400**0



**Limited Lifetime Warranty**

Ultra Faucets warrants to the original purchaser that its products will be free from defects in workmanship and materials. All Ultra Faucets are provided with a life time limited warranty. This warranty does not cover any other labor or service charges associated with the removal, repair, or reinstallation of Ultra Faucets products. This express warranty does not apply to products that have been damaged as a result of misuse, abuse, negligence, accident, faulty installation or maintenance practices and/or used in any manner contrary to those recommended by the manufacturer.

**Need help?** Please call our toll-free customer service line at 1-888-658-5872 for additional assistance or service.  
**Besoin d'aide?** Veuillez communiquer avec notre service à la clientèle au numéro gratuit 1-888-658-5872 pour tous renseignements ou services complémentaires.

CUSTOMER SERVICE TOLL-FREE #: 1-888-OK-ULTRA (658-5872) • FAX: (949) 252-9989 •  
<http://www.ultrafaucets.com>  
E-mail Address: [customerservice@ultrafaucets.com](mailto:customerservice@ultrafaucets.com)