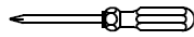


# INSTALLATION

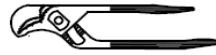
**MODEL NUMBER  
UF08X17**



## TOOLS YOU MIGHT NEED:



Phillips Screwdriver



Groove Joint Plier



Silicone Sealant



Adjustable Wrench



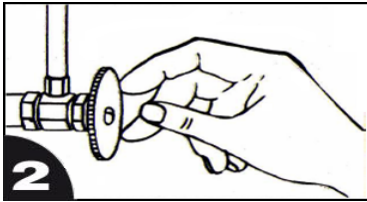
Teflon Tape



Hex Wrench

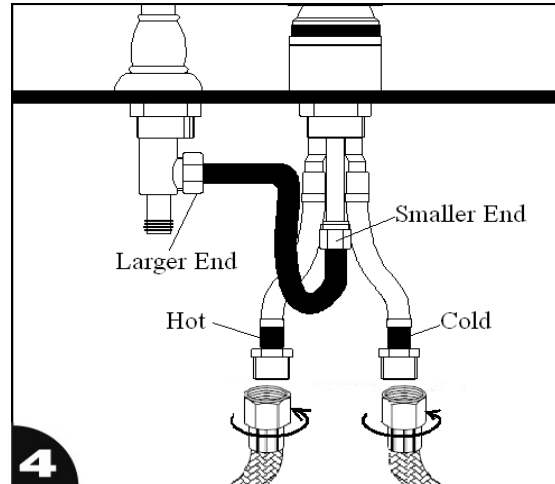
## 1 BEFORE PROCEEDING

**WARNING:** Read all the instructions before proceeding. We recommend calling a professional if you are uncertain about installing this product! This product should be installed in accordance with all local and state plumbing and building code requirements.



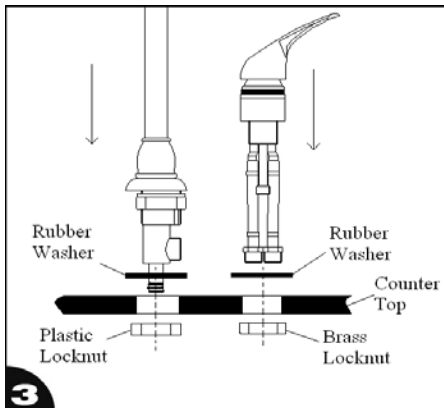
## 2 SHUT OFF WATER SUPPLY

Locate the water supply inlets and shut off both the hot and cold water supply valves. If you are replacing an existing faucet, remove the old faucet. Clean the sink surface thoroughly in preparation for the new faucet.



## 4 MAKE THE CONNECTIONS

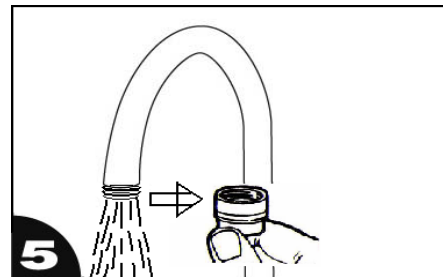
A flexible connector is provided to connect between the control unit and the spout unit; connect the larger end to the spout unit and the smaller end to the control unit as shown. Connect hot and cold water supplies as shown (Supply tubes not included). Turn on water supply valves and check for leaks.



## 3 SECURING NEW FAUCET

Place a rubber washer between the spout unit and counter top; hand tighten the spout unit from under the sink with the plastic locknut.

Place a rubber washer between the control unit and the counter top; hand tighten the control unit from under the sink with the brass locknut.



## 5 FLUSH WATER LINES

Remove the aerator from the spout tip. Turn the handle to the full on position. Run water for one minute. Repeat in hot and cold sides to remove debris that may have collected in the water lines. Reinstall the aerator.

 **ULTRA FAUCETS**

**CUSTOMER SERVICE**  
TOLL-FREE 1-888-OK-ULTRA (658-5872)  
<http://www.ultrafaucets.com>

**Your new faucet is now ready to use!**