

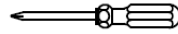
ULTRA FAUCETS

INSTALLATION



**MODEL NUMBER
UF08X05CF**

TOOLS YOU MIGHT NEED:



Phillips Screwdriver



Groove Joint Plier



Silicone Sealant



Adjustable Wrench



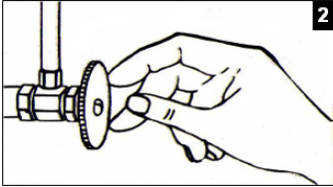
Teflon Tape



Hex Wrench

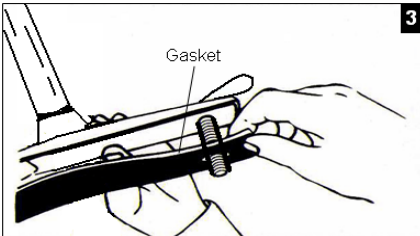
1 BEFORE PROCEEDING

WARNING: Read all the instructions before proceeding. We recommend calling a professional if you are uncertain about installing this product! This product should be installed in accordance with all local and state plumbing and building code requirements.



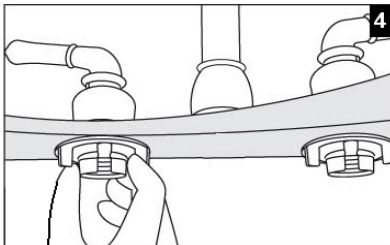
2 SHUT OFF WATER SUPPLY

Locate the water supply inlets and shut off both the hot and cold water supply valves. If you are replacing an existing faucet, remove the old faucet. Clean the sink surface thoroughly in preparation for the new faucet.



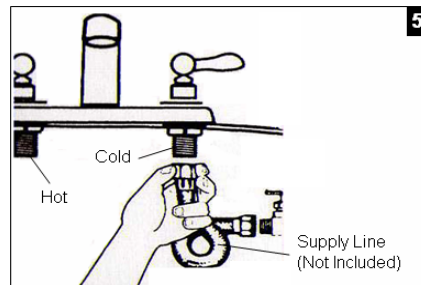
3 PLACE GASKET

Make sure attaching the Gasket to the faucet before proceeding to step #4.



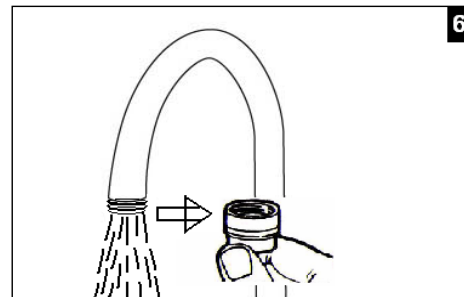
4 SECURING NEW FAUCET

Insert the shanks into the mounting holes on the sink. From under the sink, thread Lock Nut onto the shank and hand tighten. A small amount of silicone sealant may be applied between the sink and the bottom of the gasket.



5 WATER SUPPLY LINES CONNECTIONS

Connect the Hot supply line to the left shank and cold supply line to the right shank, then turn on the supply valves and check for leaks.



6 FLUSH WATER LINES

Remove the aerator from the spout tip. Turn the handle to the full on position. Run water for one minute. Repeat in hot and cold sides to remove debris that may have collected in the water lines. Reinstall the aerator.