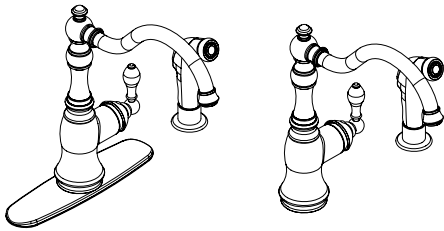


ULTRA FAUCETS INSTRUCTION



Single Handle Kitchen Faucet with Side-spray
Model#: UF11240X

Tools:

- Adjustable Wrench
- Pliers
- Pipe Wrench
- Screwdriver
- Teflon Tape

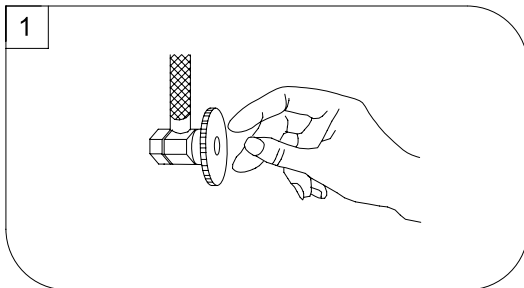


Maintenance:

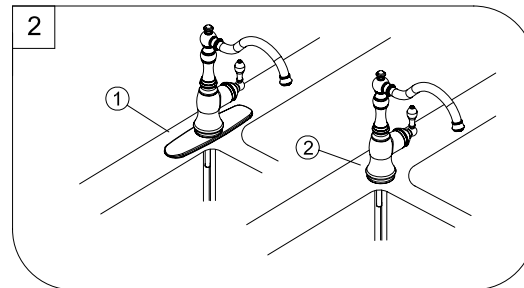
Your new kitchen faucet is designed for years of trouble-free performance.

Keep it looking new by cleaning it periodically with a soft cloth. Avoid abrasive cleaners, steel wool and harsh chemicals as these will dull the finish and void your warranty.

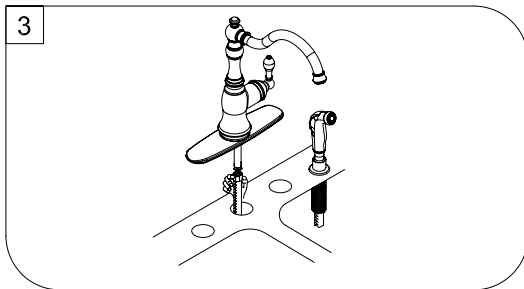
Preparation / Assembly



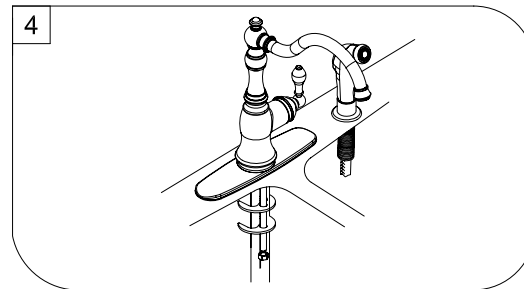
1. Shut off water supplies. Remove old faucet. Clean sink surface in preparation for new faucet.



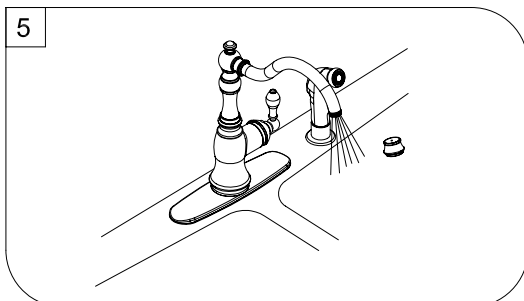
2. Place Escutcheon (1) or Flange (2) on bottom of new faucet (Optional). Position Faucet through mounting hole .



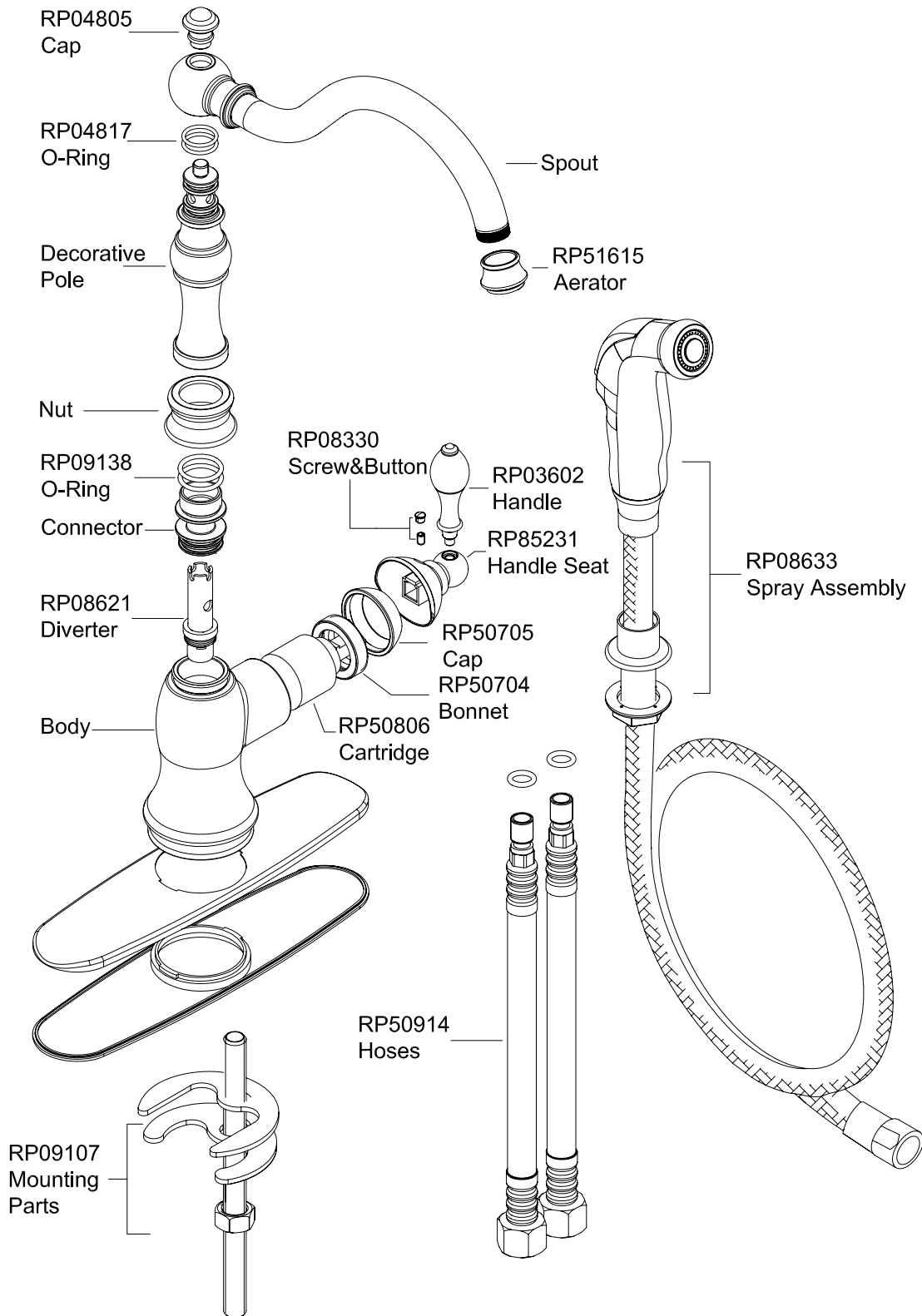
3. For models with a spray support mount spray support in far right hole in sink. Insert spray hose down through the support and up through center hole of sink. Attach spray hose to spray hose nipple.



4. Secure to sink by installing rubber washer, steel washer and nut onto mounting stud. Tighten with wrench.



5. Important: After installation is completed. Turn on water supply and allow both hot and cold water to run for at least one minute each. While water is running, check for leaks.



Limited Lifetime Warranty

Ultra Faucets warrants to the original purchaser that its products will be free from defects in workmanship and materials. All Ultra Faucets are provided with a life time limited warranty. This warranty does not cover any other labor or service charges associated with the removal, repair, or reinstallation of Ultra Faucets products. This express warranty does not apply to products that have been damaged as a result of misuse, abuse, negligence, accident, faulty installation or maintenance practices and/or used in any manner contrary to those recommended by the manufacturer.